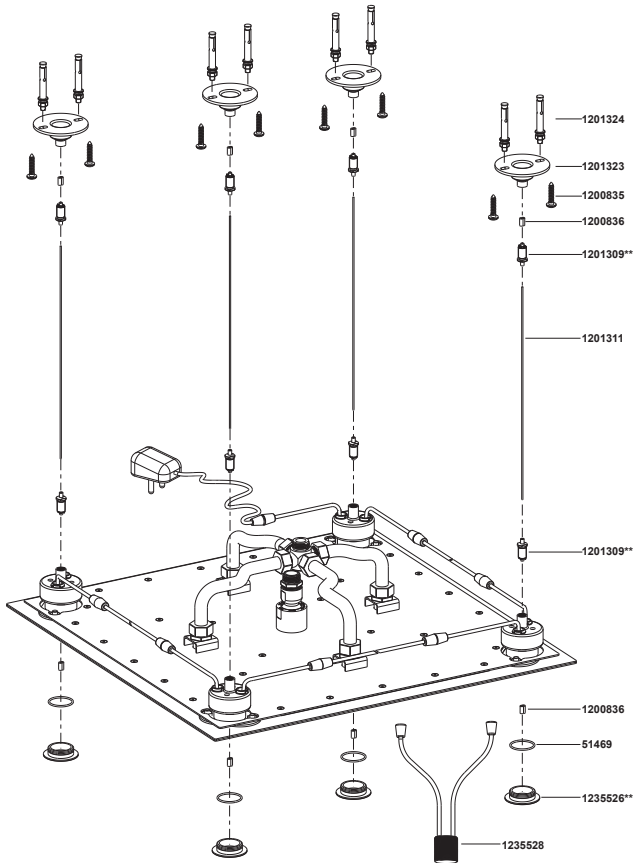


97167IN-** Loure Multifunction Rain Panel with LED 500X500 MM



**Color code must be specified when ordering

97167IN-** Loure Multifunction Rain Panel with LED 500X500 MM

BEFORE YOU BEGIN

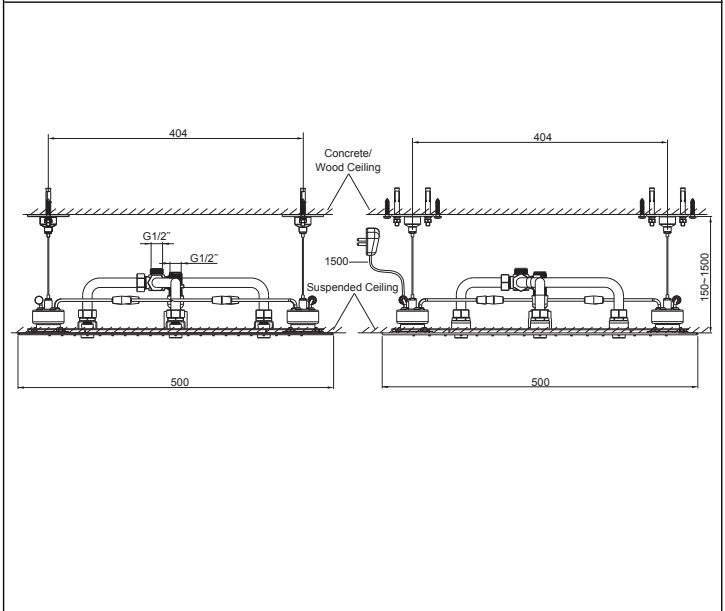
All information is based on the latest product information available at the time of publication. Kohler Co. reserves the right to make changes in product characteristics, packaging, or availability at any time without notice.

Please leave these instructions for the consumer. They contain important information.

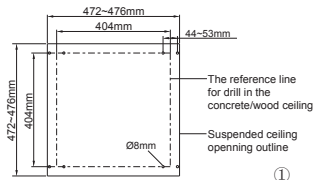
NOTES:

1. Flush the water supply pipes thoroughly to remove debris.
2. Recommended working pressure: 2 to 5 bar.
3. The highest working pressure for spray is 0.5MPa (5bar). If it exceeds 0.5MPa(5bar), a pressure reducer is needed. The highest water and environment temperature is 60°C. Please keep handspray, shower head and the shower arm away from heater, or it may become damaged and cause injury to the user.

ROUGH-IN DIMENSIONS

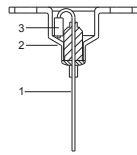


INSTALLATION

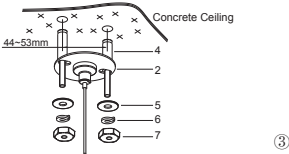


How to install the rainhead

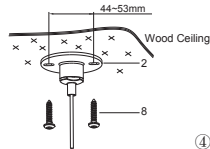
Select a suitable location avoiding the buried cables and pipes on the concrete ceiling or wood ceiling to install the rainhead. Reserve the proper space in the suspended ceiling to install the rainhead.



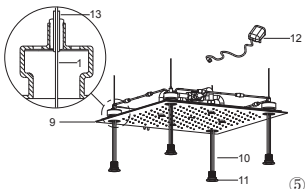
Make sure the end(3) of the stainless wire(1) is in the fix base(2) before install as shown in the figure.



For concrete ceiling, drill eight holes(Ø8mm) at the proper position in the concrete ceiling according to the marked dimensions and expansion screw's(4) diameter. Hammer expansion screws into the holes(Ø8mm). Secure the fix bases(2), the washers(5) and the locking gaskets(6) on the concrete ceiling with the nuts(7).

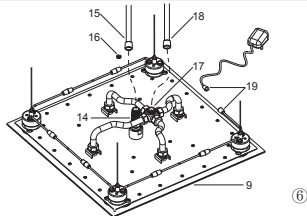


For wood ceiling, install the screws(8) at the proper position in the ceiling according to the marked dimensions.



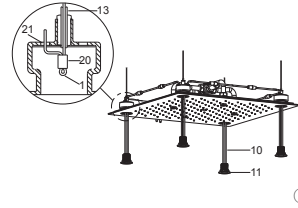
Flush the water supply pipes thoroughly for about one minute to remove debris. Pry the caps(11) gently by tool. **Note:** Do not overpull the cap to damage the electric wires(10). Plug in the power(12).

Insert the other end of the stainless wire(1) into the tubes(13) respectively. One hand push the rainhead upwards, another hand drag the stainless wire. For easy installation, make sure to keep a certain distance between the rainhead and suspended ceiling.



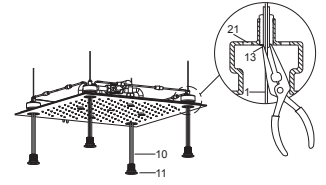
Before install the rainhead(9), install regulator(16) if needed. Remove the shower connector(14) and washer, install regulator as the figure shown. Reinstall the washer and shower connector.

The shower connector(14) is for rain mode, connect it to shower hose(15). The shower connector(17) is for massage mode, connect it to shower hose(18). Screw and tighten the butt joints(19).



Upon connecting, one hand push the rainhead upwards, another hand drag the stainless wire gently, make sure the rainhead against the suspended ceiling, the stainless wire is perfectly straight. Insert the spare wire into the clip(20), and insert the stainless wire into the hole(21) as shown in the figure. Press the cap with O-ring.

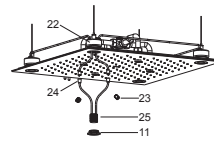
Apply silicon sealant around the rainhead to fix it if needed.



How to disassemble the rainhead

Remove the silicon sealant by tool if silicon sealant applied. Pry the caps(11) gently by tool. **Note:** Do not overpull the cap to damage the electric wires(10).

Pull out the end of stainless wire(1) from the hole(21) of nut kits. Remove the clips. Hold the rainhead, pull down the tubes(13) of the nut kit until it is stick. Keep a certain distance between the rainhead and suspended ceiling. Unscrew and unplug the butt joints(19). Unscrew the rainhead from the hose. Remove the rainhead.



How to replace the LED lamp kit

Pry the cap(11) gently by tool. Dig the sleeves(23) from the base(22) in the rainhead, and make sure the connectors(24) shown. **Note:** Do not overpull the cap to damage the electric wires(20). Unscrew and pull out the connectors. Remove the sleeves(23).

Unscrew the cap(11). Replace with a new LED lamp kit(25). Reinstall all parts.

INSTALLATION CHECKOUT

Ensure that all joint are locking. Ensure that the handle is in the off position.

Turn on the main water supply and drain, and check for leaks. Repair as needed.

Turn on/off the power switch, check for the shower lamp work.

CLEANING INSTRUCTIONS

All Finishes: Clean the finish with mild soap and warm water. Wipe entire surface completely dry with clean soft cloth. Many cleaners may contain chemicals, such as ammonia, chlorine, toilet cleaner etc, which could adversely affect the finish and are not recommended for cleaning.

Do not use abrasive cleaners or solvents on Kohler faucets and fittings.