

BEFORE YOU BEGIN

- Please read these instructions carefully to familiarize yourself with the required tools, materials & installation sequences. Follow the sections that pertain to your particular installation. This will help you avoid costly mistakes. In addition to proper installation, read all operating & safety instructions.
- All information in these instructions is based upon the latest product information available at the time of publication. Kohler India reserves the right to make changes in product characteristics, packaging or availability at any time without notice.
- These instructions contain important care & cleaning information. Please leave instructions for the consumer.

ORDERING INFORMATION

Brive+™ 2pc toilet 220 mm S-trap w/ QC Seat.....K-1939IN-S*
Includes soft close seat.....K-1877IN-*
Includes bowl.....K-1853IN-*
Includes tank.....K-1855IN-*

Brive+™ 2pc toilet 110 mm S-trap w/ QC Seat.....K-5593IN-S*
Includes soft close seat.....K-1877IN-*
Includes bowl.....K-5592IN-*
Includes tank.....K-1855IN-*

Brive+™ 2pc toilet 180 mm P-trap w/ QC Seat.....K-1921IN-S*
Includes soft close seat.....K-1877IN-*
Includes bowl.....K-1851IN-*
Includes tank.....K-1855IN-*

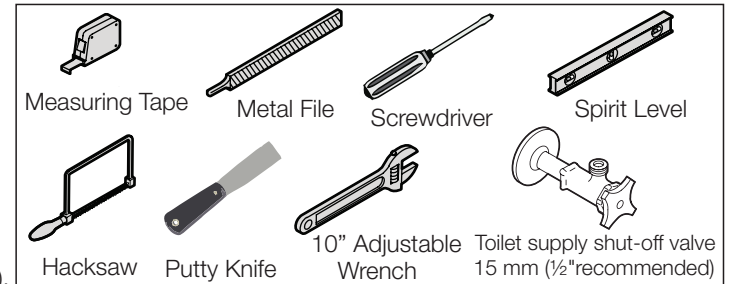
Certified Most Water Efficient by IAPMO, Highest Rating as per WEP-I 2013.

Color code (*) must be specified when ordering

NOTES

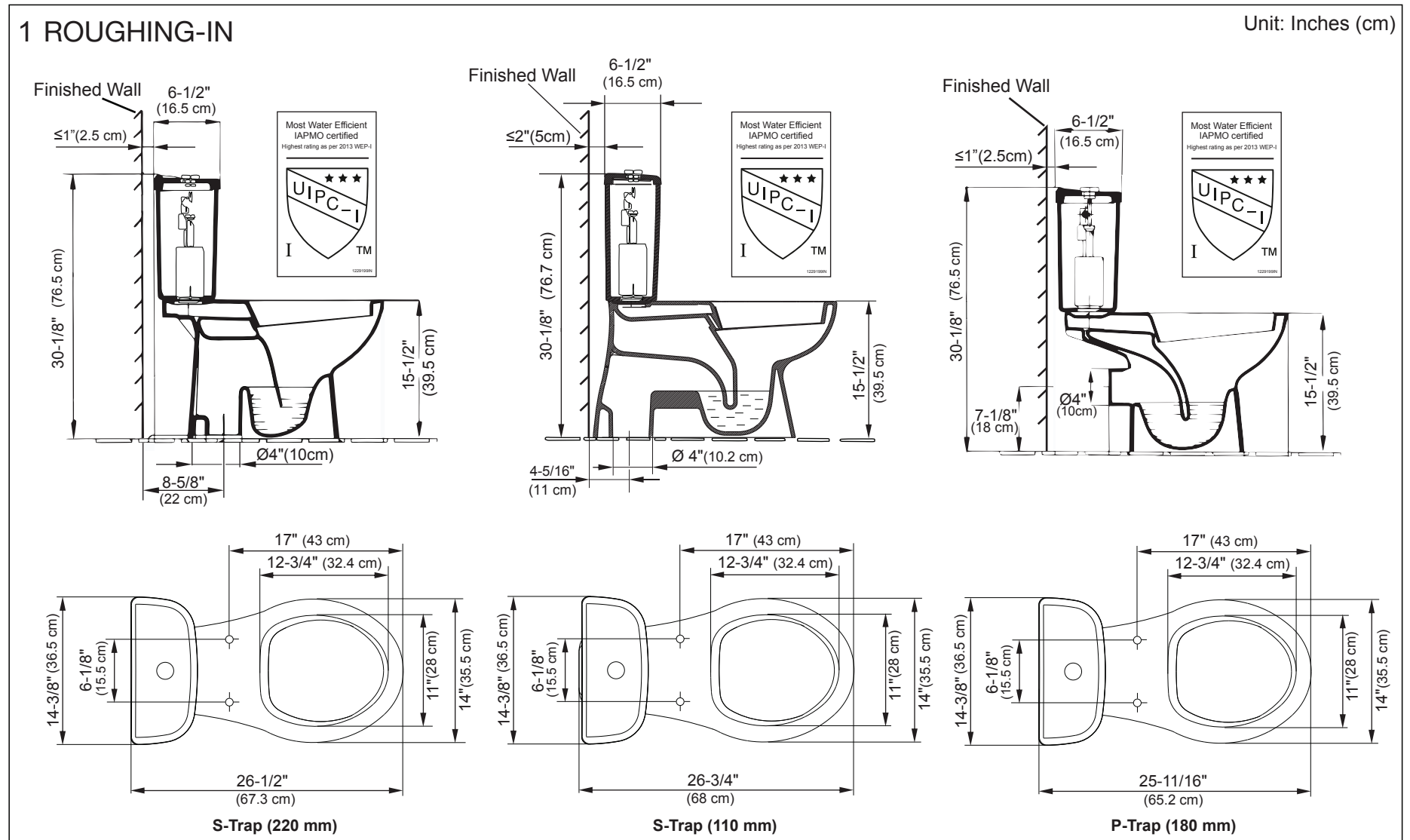
- Observe all local plumbing & building codes.
- Shut off the water supply.
- Ensure that the new drain pipe and shut-off valve have the correct roughing-in dimensions as per the toilet bowl (P-Trap or S-Trap). See Fig. #2.
- Be very careful while working with Vitreous China products. Vitreous China can break or chip if the bolts or nuts are over tightened, or if carelessly handled.
- Carefully inspect the new fixture for any sign of damage.
- Fixture dimensions are nominal & conform to tolerances established by ASME Standards (A112. 19.2-2003).

TOOLS & MATERIALS REQUIRED (Not supplied)



⚠ WARNING: Risk of external leakage. The valve nut has been factory-tightened. In case of leakage, use wrench to tighten 1/4 turn past hand tight. See Fig. #3a.

NOTICE : If no shut-off valve exists, install a shut-off valve below the tank before installing the new toilet. Flexible hose is recommended to connect the supply line to the fill valve. If you use a rigid connection, take care not to apply side forces to the bottom of the fill valve.



INSTALLATION GUIDELINE

Refer Fig. #1 for **Rough-in dimensions.**

INSTALLATION INSTRUCTIONS :

1. REMOVE EXISTING TOILET (if applicable)

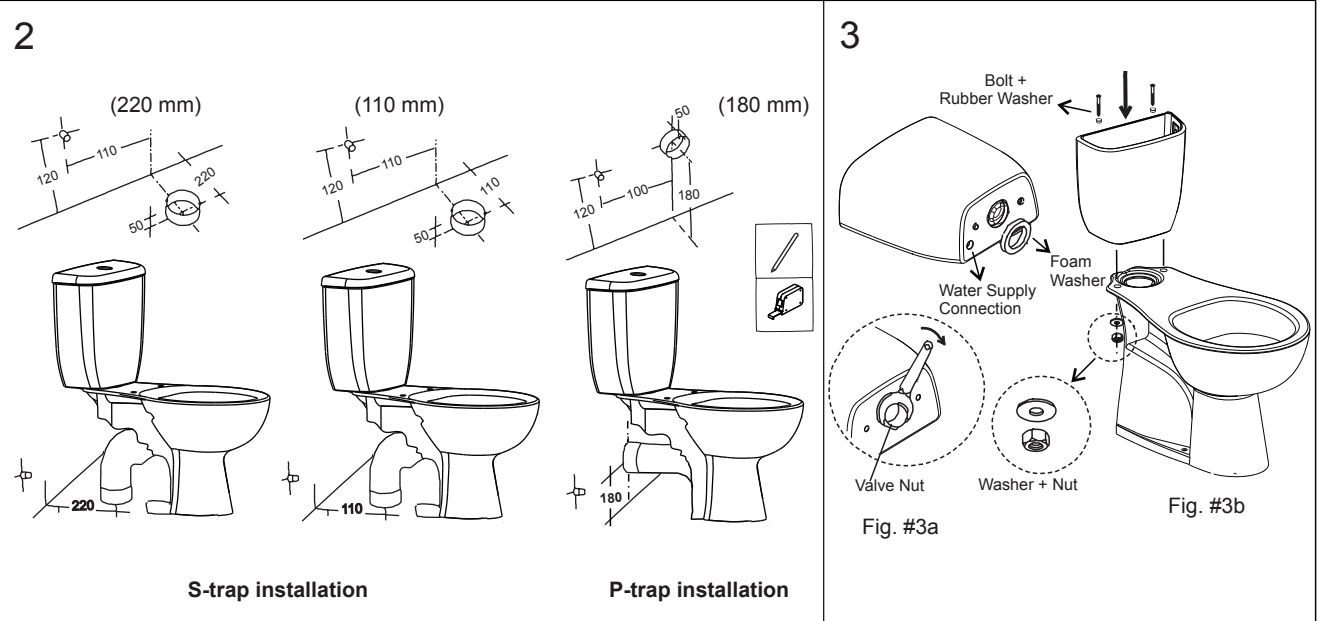
Turn off the water supply. Flush the toilet & use a sponge to remove the remaining water from the tank & bowl. Disconnect the supply shut-off valve (if present) & remove the old bowl & tank.

2. ASSEMBLE TANK BOLTS & WASHERS (Provided)

Place large foam washer on the shank of the flush valve protruding out of the tank. Place the tank on bowl & insert bolt with rubber washer through the mounting hole at the bottom of the tank.

Tighten with nuts & washers from beneath the bowl's flange.

Refer Fig. #3b.



3. TOILET & WATER SUPPLY INSTALLATION

Place the toilet in its final position & connect the outlet to the waste pipe with recommended installation parts.* Use plastic drill guide & 8mm drill-bit to drill the mounting holes on the floor.

Refer Fig. #4a.

a) Insert plastic anchors & tighten the floor fixing bolts with screw driver. Place caps on bolt heads.

Refer Fig. #4b.

WARNING: Do not over-tighten floor bolts, as vitreous can get damaged.

b) Connect fill valve to shut-off valve using flexible hose & turn on the water supply.

Refer Fig. #4c.

4. WATER LEVEL CHECK (if necessary)

Make sure the arrow on the red clip on the flush valve is secure & pointing to #4.

Refer Fig. #5.

5. OVERFLOW HEIGHT ADJUSTMENT (if necessary)

Adjust overflow tube so that the top of the tube is 20mm above the waterline.

Refer Fig. #6.

6. PUSH BUTTON CONNECTION

a) Remove the locknut & place the push button assy through the hole of tank lid. Tighten the locknut from the bottom of the lid.

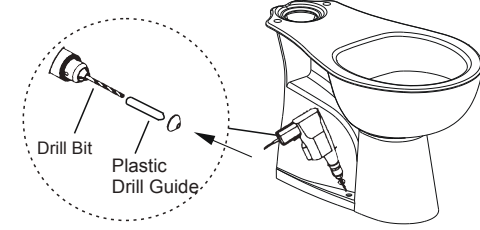
b) Cut the rods as per the length required & install the tank lid.

c) Flush the toilet several times & check all connections for leak. **Refer Fig. #7.**

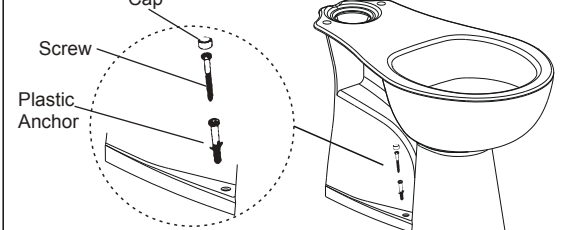
7. Install the toilet seat as per the installation instructions provided with the seat.

* Refer below given information for Recommended Installation Parts.

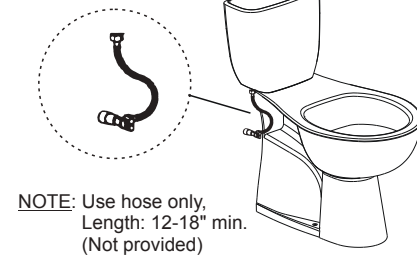
4a



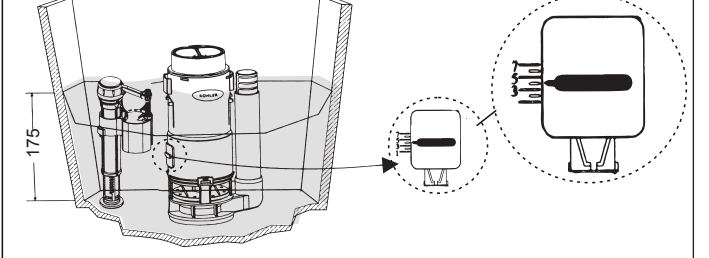
4b



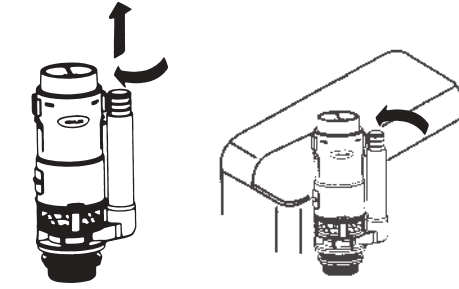
4c



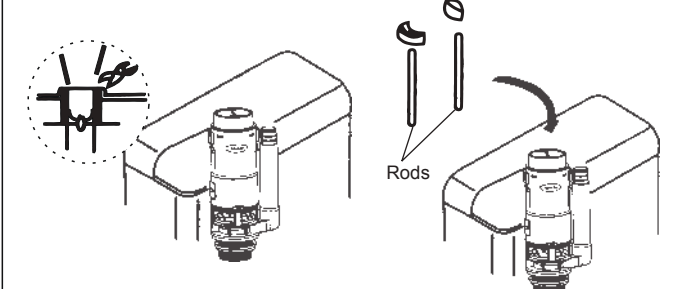
5



6



7



SERVICE PARTS LIST

8

1211796-* Tank Cover

1102601 Push Button Assembly

1102431IN-D Fill Valve

1086448IN-D Flush Valve

1191988 Hardware Pack

1032265 Tank Gasket

1004141 Floor Mounting Kit

1191987-* Hinge Assembly Right (See table for Part Nos.)

1191986-* Hinge Assembly Left (See table for Part Nos.)

1877IN-* Toilet Seat

**** 1238749** Tank Accessory Pack consists of :-
Brass Screw (2 nos.), Rubber Washer (2 nos.),
Plastic Washer (2 nos.), Nut (2 nos.)

Screw**

Rubber Washer**

Washer

Locknut

Flush Valve Gasket

Holder Nut

Washer**

Nut**

Toilet Seat	Hinge Assy Left	Hinge Assy Right
1877IN-*	1191986-*	1191987-*

Recommended Installation Parts

<p>1. 1036901 P-Trap Waste Pipe</p> <p>Use 1036901 for P-Trap installation at 180mm rough-in</p>	<p>2. 1036902 S-Trap Waste Pipe</p> <p>Use 1036902 for P-Trap to S-Trap conversion, keeping min. rough-in as 145mm</p>
---	---

Installation parts shown above are not supplied with the product & are procured separately

Color code (*) must be specified when ordering

IMPORTANT CONSUMER INFORMATION

CONSUMER RESPONSIBILITIES

Please use mild soap to clean the toilet. Do not use abrasive cleaners or solvents.

WARNING: Risk of property or product damage.

Do not use "In-tank cleaners". Products containing chlorine (calcium hypochlorite) can seriously damage fittings in the tank. This damage can cause leakage and property damage.

NOTE: Do not use white cement or high lime content cements to install this toilet. The expansion of cement due to a rise in temperature may make the toilet crack or cause damage.

Kohler is not responsible for any damage due to installation with the use of cement.

Toll Free 1800 103 2244

kohler.co.in

© 2006-16 Kohler Co.