

Neorest LE II



Product Features

NEOREST Wall-hung Toilet/Bidet, size: w:675×d:423×h:461(mm)

Flush Volum: 3L/4.5L. Drainage mode: Wall drain (P Trap)

Flush Type: 3D Tornado Flush

Toilet Rough-in: H=220mm

Max power 1284W

Power Source: 220V(50Hz)

Product Mix:

Concealed flush tank :WH036D

Concealed flush tank panel: MB005DGN

Wall-hung simple luxury design with concealed valve and power.

High-end feeling remote control corresponds with the toilet by the same Gold look.

Revolutionary technology, Actilight, Keeps the toilet clean on its own, riding it of both visible & invisible waste

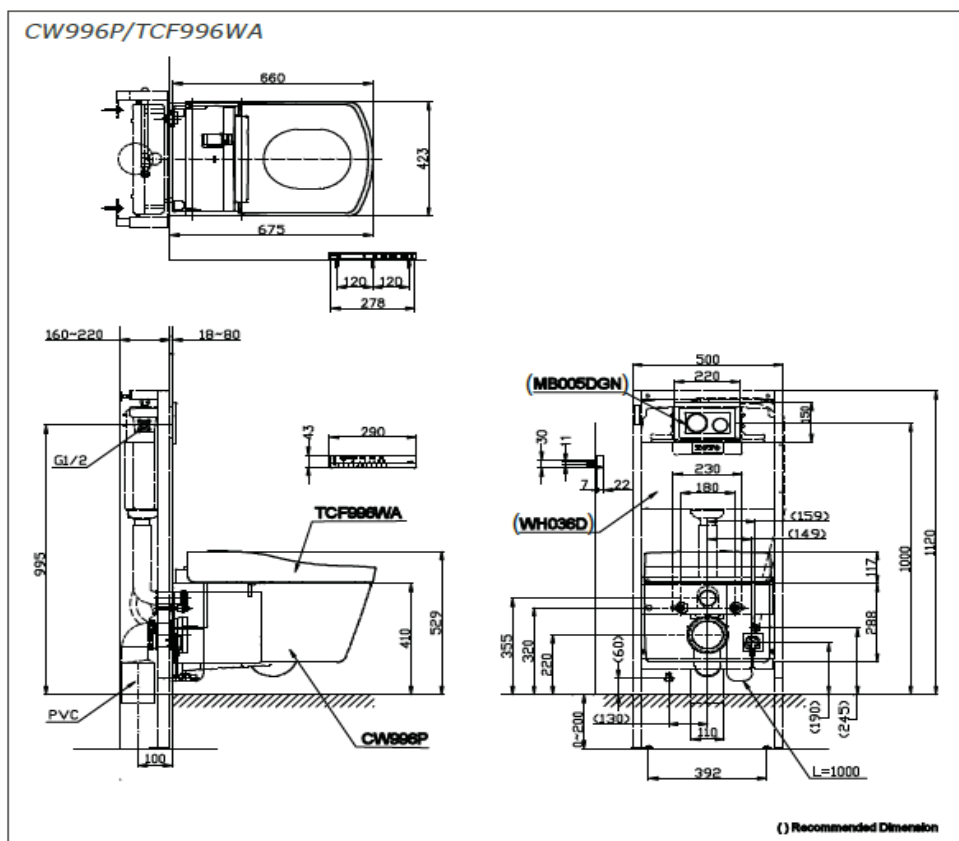
ewater (Sanitizing technology) applied. ewater is an original technology by TOTO which could thoroughly clean the bacteria and debris that normal cleaning way couldn't clean with the hypochlorite electrolyzed from daily water.

A perfect intelligent experience with all the sensing functions like 'auto flushing', 'auto deodorizing', 'auto lid open /close'.

Washlet function provides warm water washing, dryer, heated seat, air exchange functions.

Recommended to Use 1.5KVA Voltage Stabilizer to avoid Voltage Fluctuation.

- Recommended Water Hardness Quality $\leq 50\text{ppm}$
- Recommended to Use Automatic Water Pressure Pump for 3.0 Bar Water



Suggestion Fittings & Parts

TOTO INDIA INDUSTRIES PVT. LTD.
101, Kamla Executive Park, opp. Vazir Glass Works,
Andheri Kurla Road, Andheri (East), Mumbai 400059.
Tel : 91-22-28325741/42 Fax : 91-22-67258780