

BEFORE YOU BEGIN

- Please read these instructions carefully to familiarize yourself with the required tools, materials, and installation sequences. Follow the sections that pertain to your particular installation. This will help you avoid costly mistakes. In addition to proper installation, read all operating and safety instructions.
- All information in these instructions is based upon the latest product information available at the time of publication. Kohler China reserves the right to make changes in product characteristics, packaging, or availability at any time without notice.
- These instructions contain important care, cleaning, and warranty information-**please leave instructions for the consumer.**

安装之前

- 请仔细阅读说明书，熟悉所需工具、材料和安装顺序，参照相关章节完成您所需的安装，以避免昂贵的损失，除了正确的安装外，请详阅所有的操作和安全说明。
- 本说明书所含的一切资料均以印刷时所有的最新产品为准，科勒中国保留权利随时更改产品特性、包装或供应情况，恕不另行通知。
- 本说明书也包含了有关保养、清洁及产品担保等重要信息-请交予用户保存。

ORDERING INFORMATION

ODEON® Wall-hung ToiletK-8752T
Includes BowlK-8750T
Includes SeatK-8741T-*

定购信息

奥帝安挂墙式座便器K-8752T
含座便器K-8750T
含座便器盖板K-8741T-*

NOTES

- Observe all local plumbing and building codes.
- Shut off the water supply.
- Seat post holes are on 155mm centers.
- Passageways is 60mm.
- Water depth from rim is 210mm.
- Ensure that the new drain and shut-off valve have the correct roughing-in dimensions. **See Fig.#1.**
- Be very careful while working with vitreous china products. Vitreous china can break or chip if the bolts or nuts are overtightened, or if carelessly handled.
- Carefully inspect the new bowl for any sign of damage.
- Fixture dimensions are nominal and conform to tolerances established by ASME Standards (A112. 19.2M).

注意

- 请遵守当地所有给排水及建筑规定。
- 关闭供水。
- 座便器盖板孔中心间距为155mm。
- 排污通道为60mm。
- 座便器上表面距离水面210mm。
- 确保新排污管和止水阀坑距尺寸正确，请参阅图1。
- 请小心处理釉面陶瓷产品，因其容易破损和崩裂，故不可把螺栓或螺母上得过紧，且须小心轻放。
- 请仔细检查座便器是否有损坏。
- 部件尺寸为标定值，误差符合美国机械工程师学会标准ASME(A112.19.2M)。

TOOLS AND MATERIALS REQUIRED (Not supplied)

- 254mm adjustable wrench
- Metal file (file cut)
- Tape measure
- Tubing cutter
- Level
- Hacksaw
- Putty knife
- Screwdriver
- Straight pipe coupling
- Connection packing

所需工具及材料(不随货供应)

- 254mm活动板钳
- 锉刀
- 卷尺
- 切管刀
- 水平尺
- 钢锯
- 涂油灰刀
- 螺丝刀
- 联结直管
- 联结组件

广东省佛山市三水区乐平镇第二工业区
佛山科勒有限公司 邮编: 528137

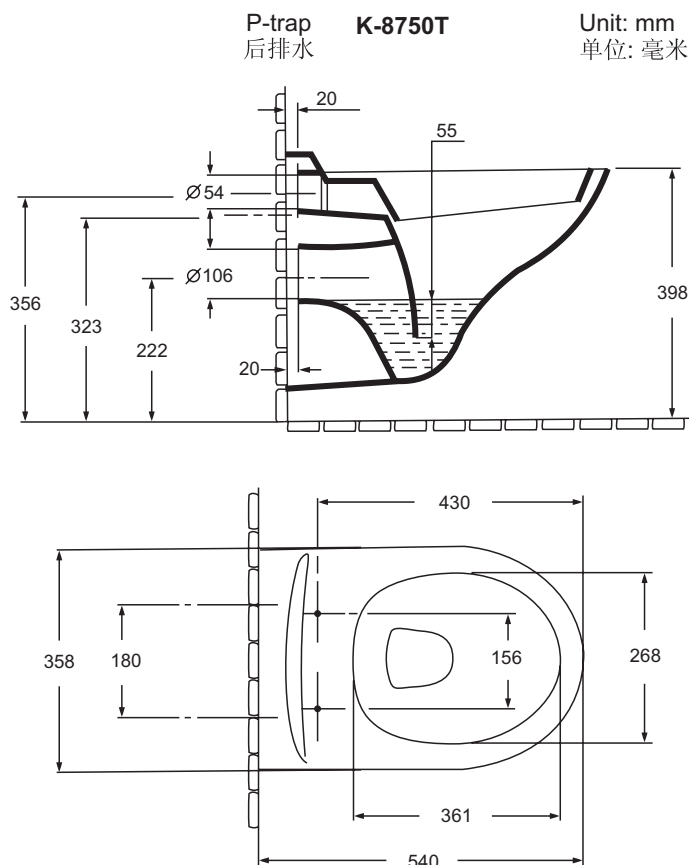


Fig.#1 图1

INSTALLATION

安装

1. INSTALL THE TANK

- Turn the water supply off before installing the new toilet.
- Install the concealed tank system in wall before decorating the wall.
- Install the tank system per tank's installation instructions.

Recommended tanks (Fig.#2-a)

Kohler Inwall Tank 6284T-NA (With iron rank)

And Inwall Tank cover 6283T-**

Recommended sensor

Kohler ODEON TOUCHLESS TOILET SENSOR K-744T

Recommended rank dimension(Fig.#2-b)

- 1) Rank height should be adjust between 0~200mm.
- 2) Rank should support weight 400kg.

1. 安装水箱

- 安装新座便器前先关闭供水。
- 在装饰墙面前先将入墙式水箱系统安装入墙体。
- 参照水箱安装说明书完成水箱系统的安装。

推荐使用的水箱(图2-a)

科勒入墙式隐藏水箱6284T-NA (含固定支架)

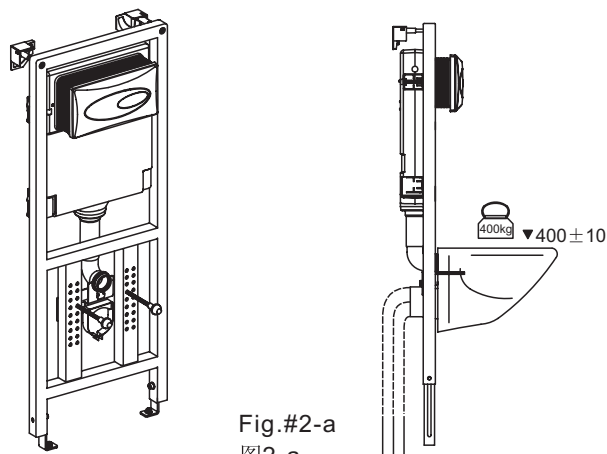
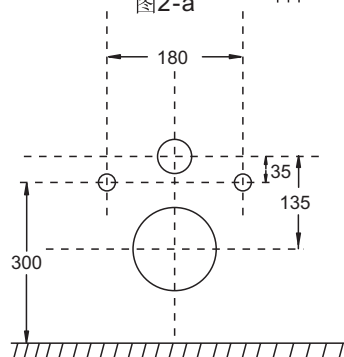
及入墙式隐藏水箱面板6283T-**

推荐使用的感应器

科勒奥帝安节水型座便器感应冲水器K-744T

推荐支架关键尺寸图(图2-b)

- 1) 支架应具备可调节高度调节范围0~200mm。
- 2) 同时可承重400kg。


Fig.#2-a
图2-a

Fig.#2-b
图2-b

2. SET THE SPACING OF THE BOWL

After you install the tank, be careful to set the spacing of the bowl on wall according to the dimensions as shown.

2. 座便器定位

水箱安装完成后, 根据图示尺寸, 小心地在墙面上定好座便器的位置。

Unit: mm
单位: 毫米

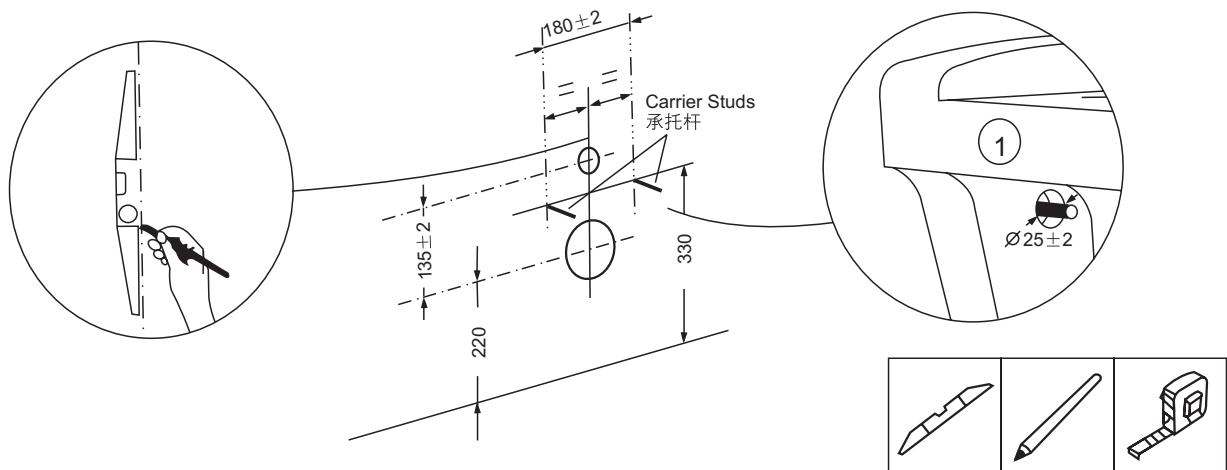


Fig.#3 图3

3. ATTACH CONNECTION PIPE

- Attach pipe with gasket to the inlet to link to the concealed tank.
- Attach pipe with gasket to the outlet.
*Apply gasket for sealing the bowl to wall.
- You may apply some lubricant to help connect smoothly.

3. 安装联结管

- 联结管装上垫圈, 接上入水口, 联结入墙式水箱。
- 联结管装上垫圈, 接上排污口。
*垫圈使座便器与墙面间严丝合缝。
- 可以使用润滑剂, 有助联结。

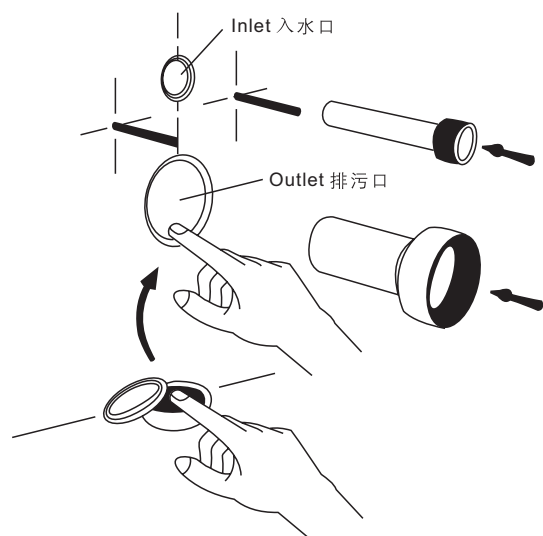
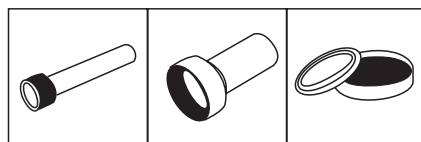


Fig.#4 图4

4. INSTALL THE NEW BOWL

Apply a little silicone sealant along the edge, to fill the gap between bowl and wall. **See Fig. 5a.**

4. 安装新座便器

沿座便器边缘涂少量硅胶密封胶，填补座便器与墙面之间的空隙。见图5a。

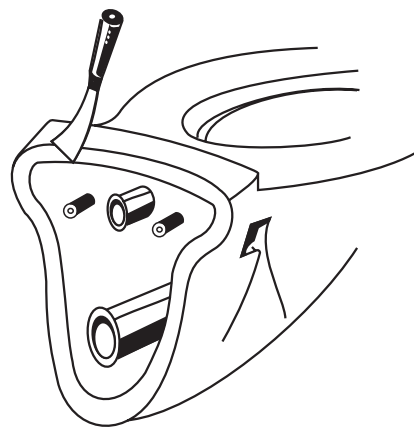


Fig. #5a 图5a

Place the new bowl on the wall through the carrier. Wrench the nut to tighten and make them attached securely. **See Fig. 5b.**

- Torque for tightening nuts is recommended to be within the range from 8 Nm to 12 Nm.

座便器穿过承托杆置于墙上。上紧螺母，固定座便器。见图5b。

- 上紧螺母所用的扭矩推荐值为8Nm至12Nm。

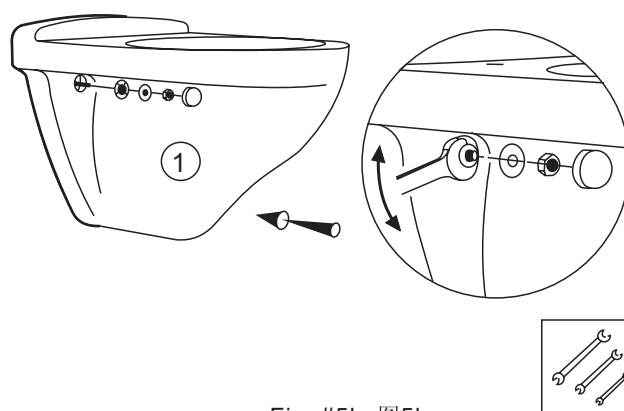


Fig. #5b 图5b

Adjust to horizontal and finish tightening. **See Fig. 5c.**

座便器调整至水平，然后完成固定。见图5c。

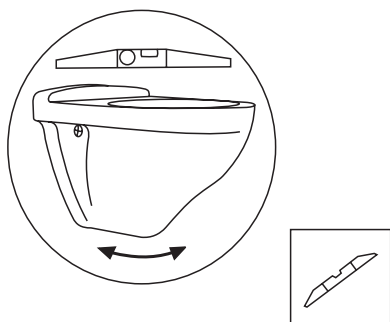


Fig. #5c 图5c

Apply sealant to make sure the bowl's edge seals to the wall. **See Fig. 5d.**

使用密封胶，保证座便器边缘紧贴墙面。见图5d。

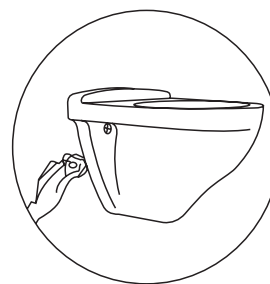


Fig. #5d 图5d

5. INSTALL SEAT WITH HARDWARE PROVIDED. See Fig. #6.

5. 用配套提供的座厕板安装组件来安装盖板。见图6。

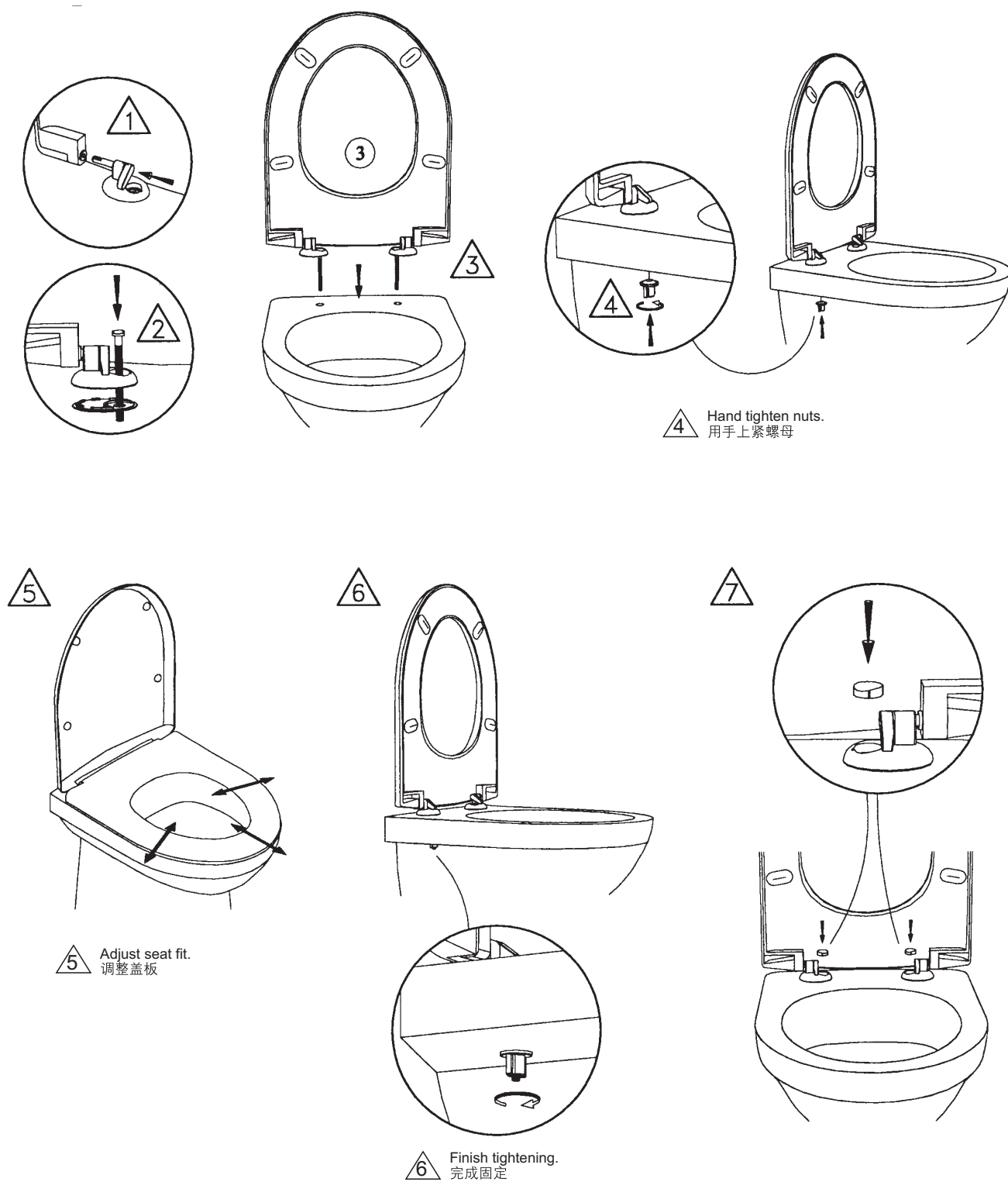


Fig. #6 图6

CONSUMER RESPONSIBILITIES

When cleaning up after installation, do not use abrasive cleansers, as they may scratch and dull the toilet surface. Use warm water and a liquid detergent to clean the surface.

Remove stubborn stains, paint, or tar with turpentine or paint thinner. Do not allow cleaners containing petroleum distillates to remain in contact with any toilet surface for long periods of time.

Remove plaster by carefully scraping with a wood edge. Do not use metal scrapers, wire brushes, or other metal tools. Use a powder type detergent on a damp cloth to provide mild abrasive action to any residual plaster.

Clean the outside surface of your vitreous china product with mild soap and warm water. Wipe the entire surface completely dry with a clean, soft cloth.

Most toilet bowl cleaners are not harmful to the vitreous china surface of the toilet bowl. Please follow the bowl cleaner manufacturer's instructions carefully.

Do not use abrasive cleaners or solvents.

用户责任

安装完成进行清理时，切勿使用腐蚀性清洁剂，因为它们会刮伤座便器表面，使色彩变得黯淡。使用温水和液体清洁剂来清洁表面。

使用松节油或油漆稀释剂，清除顽固污渍、油漆或柏油。切勿让含有石油提炼物的清洁剂长时接触座便器表面。

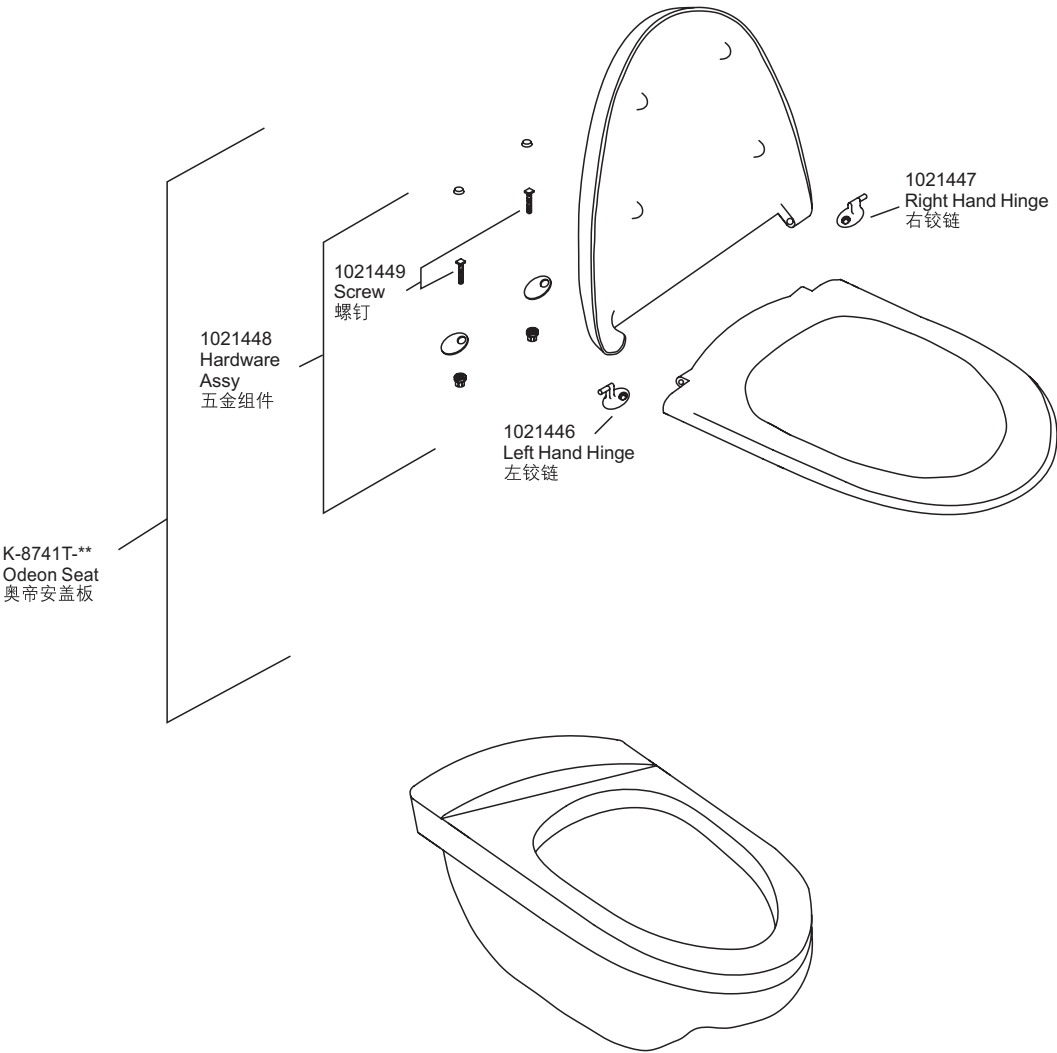
使用木片小心地刮除油灰，切勿使用金属刮刀，钢丝球，或其它的金属工具。使用粉末状清洁剂和湿布柔和地擦去油灰。

使用中性肥皂和温水清洁釉面陶瓷产品的表面。擦拭整个表面，用干净的软布擦干。

大多数马桶清洁剂对座便器表面是无害的，请认真遵循马桶清洁剂制造商的指示来操作。

请勿使用腐蚀性清洁剂或溶剂。

欧洲型挂墙式座便器	K-8752T
座厕盖板	K-8741T-**



** Color code must be specified when ordering.